

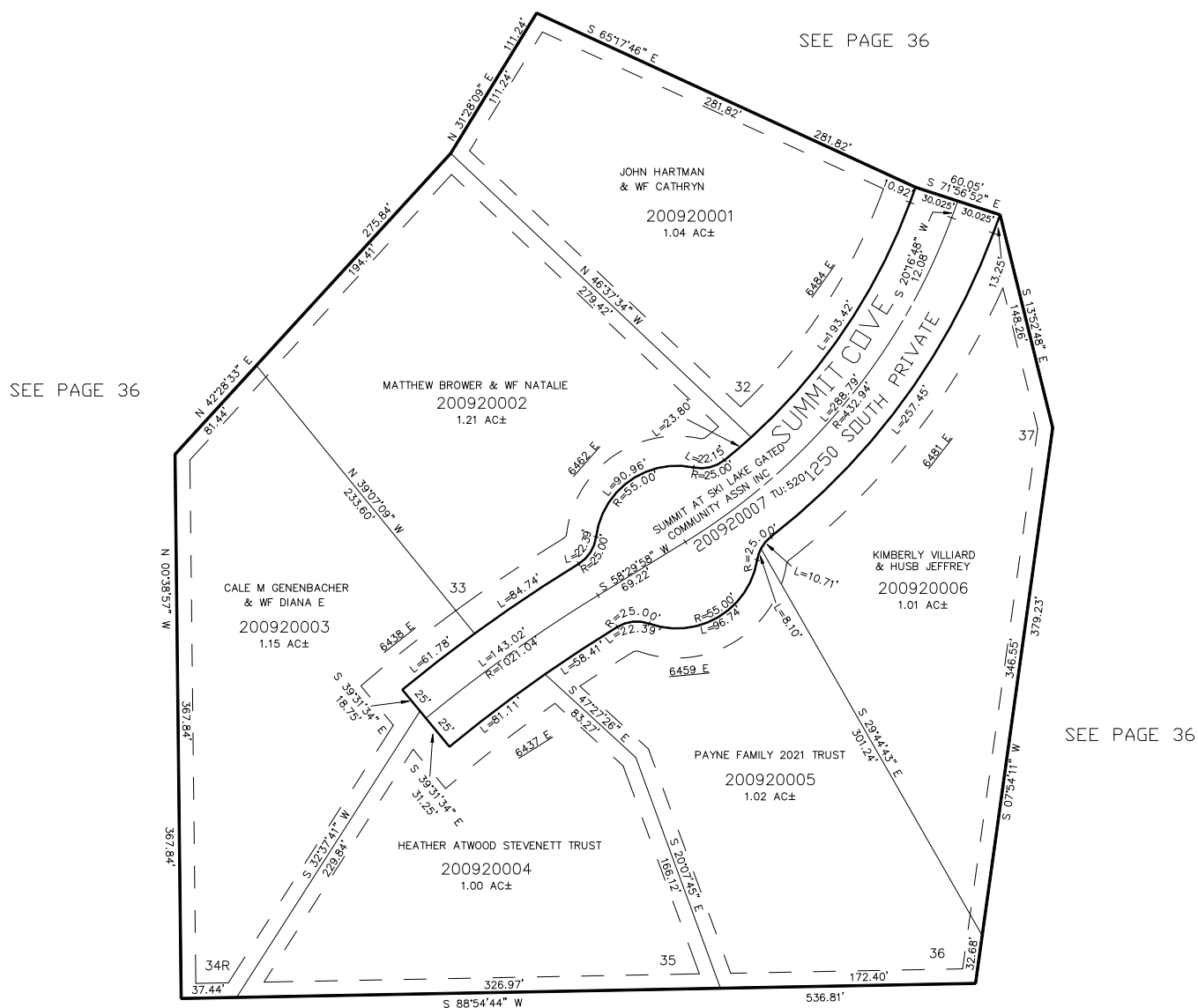
PART OF THE NW.1/4, OF SECTION 24, T.6N., R.1E., S.L.B. &amp; M.

## THE SUMMIT AT SKI LAKE No. 8

IN WEBER COUNTY

TAXING UNIT: 58, 520

SCALE 1" = 60'



10' UTILITY & DRAINAGE EASEMENTS EACH  
SIDE OF PROPERTY LINES AS INDICATED  
BY DASHED LINES EXCEPT AS OTHERWISE  
SHOWN.

SEE PAGE 36

FOR COMPLETE ENG DATA SEE  
ORIGINAL DEDICATION PLAT IN  
BOOK 61, PAGE 43 OF RECORDS.

\*FOR TAX PURPOSES ONLY\*